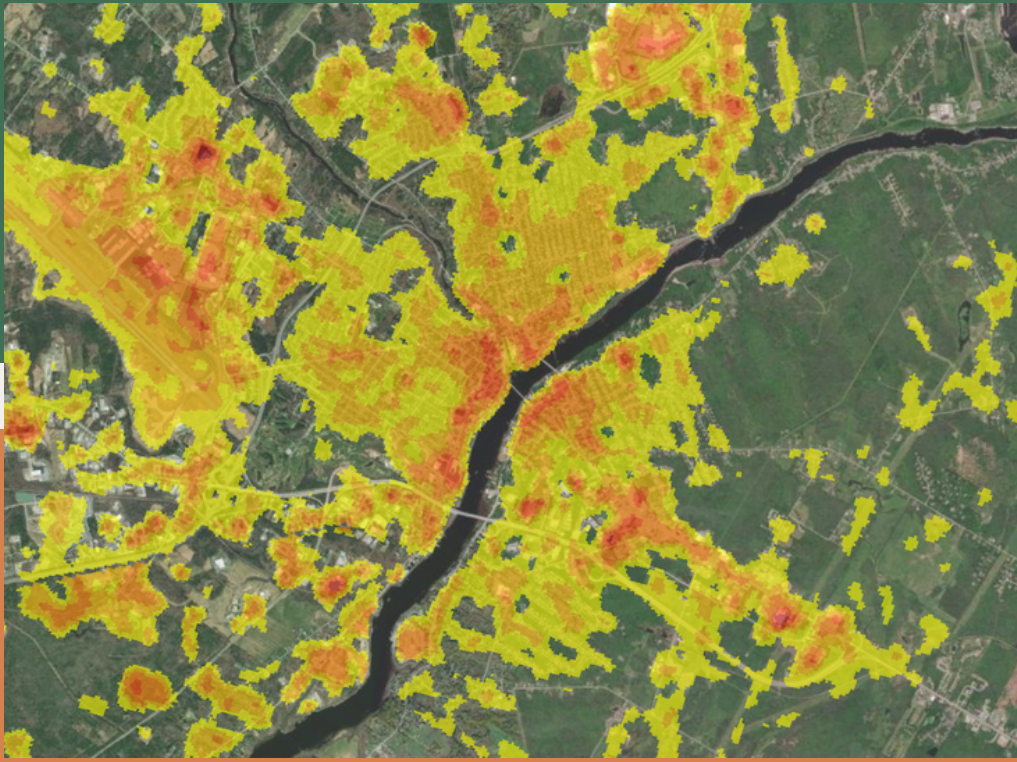




PENOBSCOT CLIMATE ACTION

PROJECT AREA

The project area includes the municipalities of Bangor, Bradley, Brewer, Hampden, Hermon, Milford, Old Town, Orono, Orrington, and Veazie as well as Penobscot Indian Island.



PHASE 1 - COMPLETE!

The goal of the first phase was to determine what is at risk.

Vulnerability Assessment

The region's resilience was analyzed to determine what infrastructure and communities are vulnerable to climate change impacts. This included collecting data on facilities, services, and populations as well as mapping projected climate hazards such as flooding, extreme heat, and extreme weather patterns.

Greenhouse Gas Inventory

Greenhouse gas producing activities and facilities were tracked in order to calculate the region's current emissions profile including where emissions are coming from, what quantity is being produced, and what emissions are within our control to reduce.

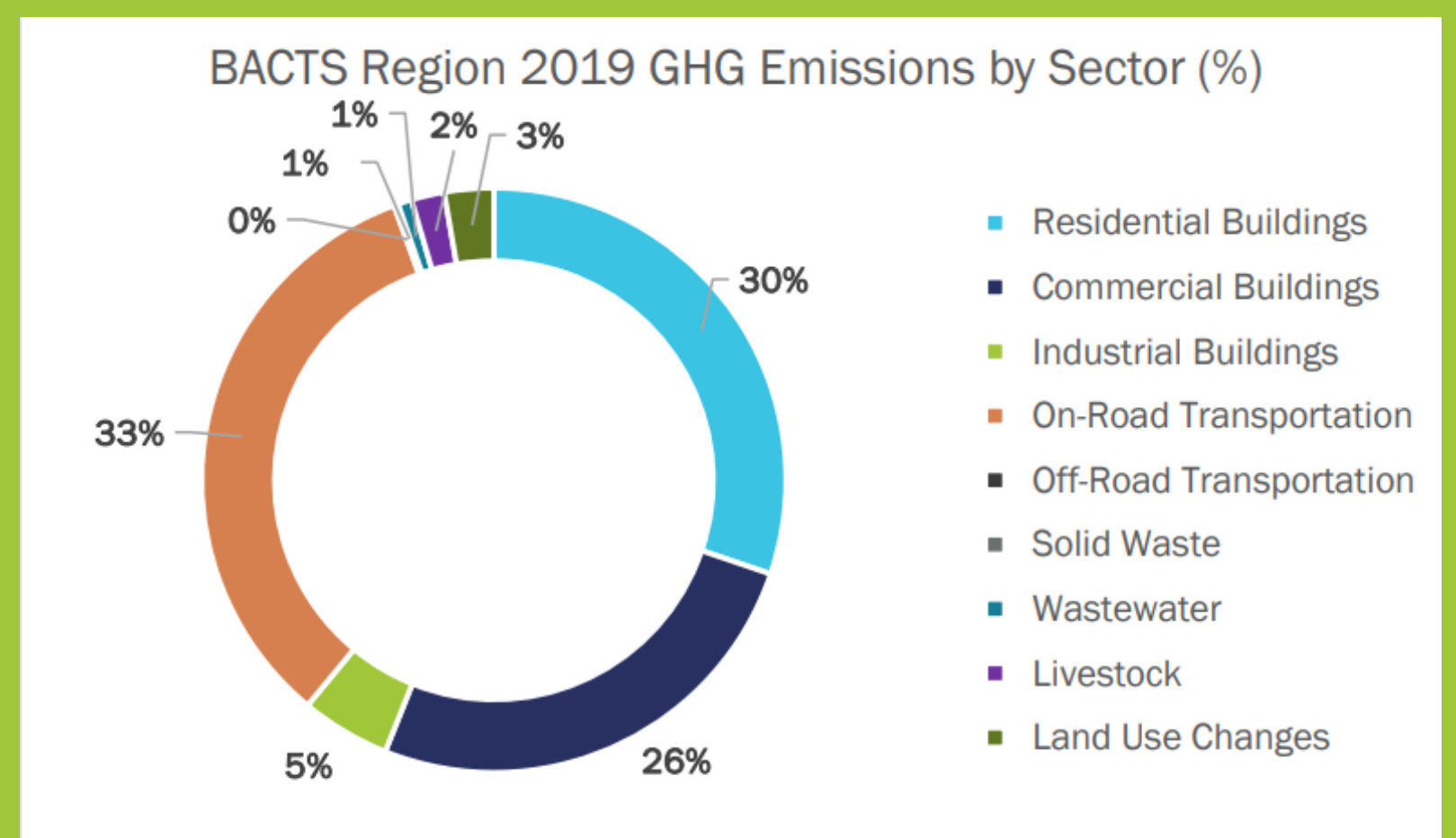
MAJOR FINDINGS

How will we experience climate change impacts locally?

- **Rising Temperatures:** The northeast is warming faster than any other region in the U.S.. This region will experience more extreme heat index days each year. Seasonal shifts will impact waterbodies, snow melt, and the freeze/thaw cycle.
- **Extreme Precipitation and Inland Flooding:** This area will see increases in intense, short duration precipitation events which create risk of flash flooding, especially in areas without adequate infrastructure capacity.
- **More Frequent and Intense Storms:** Shifts in the type and severity of storms we typically experience may include more extreme wind and more ice storms which can have very damaging impacts on homes, electricity infrastructure, roads, etc.
- **Sea Level Rise:** Maine is projected to experience 3.9 to 8.8 feet of sea level rise by the year 2100. The Penobscot River is tidally influenced which exposes the adjacent areas to sea level rise and corresponding storm surge.

How does tracking emissions sources help us take action?

There are many ways to reduce greenhouse gas emissions. Specific strategies can be developed for different sectors (buildings, roads, agriculture, etc.) and for different interest groups (municipal government, residents, businesses, etc.) in order to efficiently allocate effort and resources.



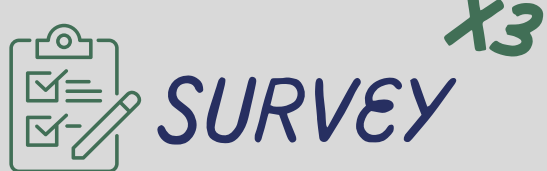
PHASE 2 - IN PROGRESS

The goal of Phase 2 is to develop specific strategies to address areas of vulnerability and reduce our greenhouse gas emissions. This phase will include extensive public outreach to identify community prioritized goals and outline what programs, policies, and projects can be implemented to achieve these goals.

SCHEDULE AND ACTIVITIES

Define Principles
and Priorities

Mar - June 2023



Co-Create
Solutions

Jun - Oct 2023



Identify
Implementation

Oct 23 - Feb 24



Launch
Toolkits

Feb - Mar 2024

Ten Climate Action and Adaptation Toolkits

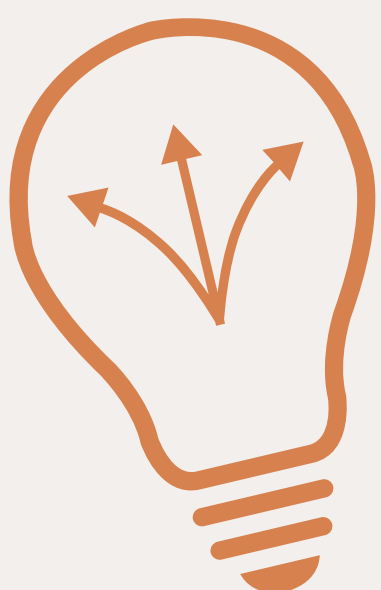
DELIVERABLES

- **Purpose:** Outline specific strategies that can easily and quickly be implemented to address local issues and build resilience regionwide.
- **Strategy Selection Process:** The chosen strategies will be co-developed with local stakeholders and residents in order to determine which actions are most needed and which have the highest potential to succeed in our unique area.
- **Audience:** Portions of these toolkits will target municipalities, local businesses and organizations, or residents for implementation
- **Resources:** The toolkits will also identify resources to assist with strategy implementation including: alternative funding opportunities, relevant information/plans, and local experts/stakeholders. Calling upon these resources will build capacity and momentum for this work.

Get project updates, take the survey, or give us feedback by visiting the project website at:
penobscotclimateaction.org

OR

Contact Madeline Jensen at: madeline.jensen@bactsmmpo.org



PENOBSCOT
CLIMATE ACTION

