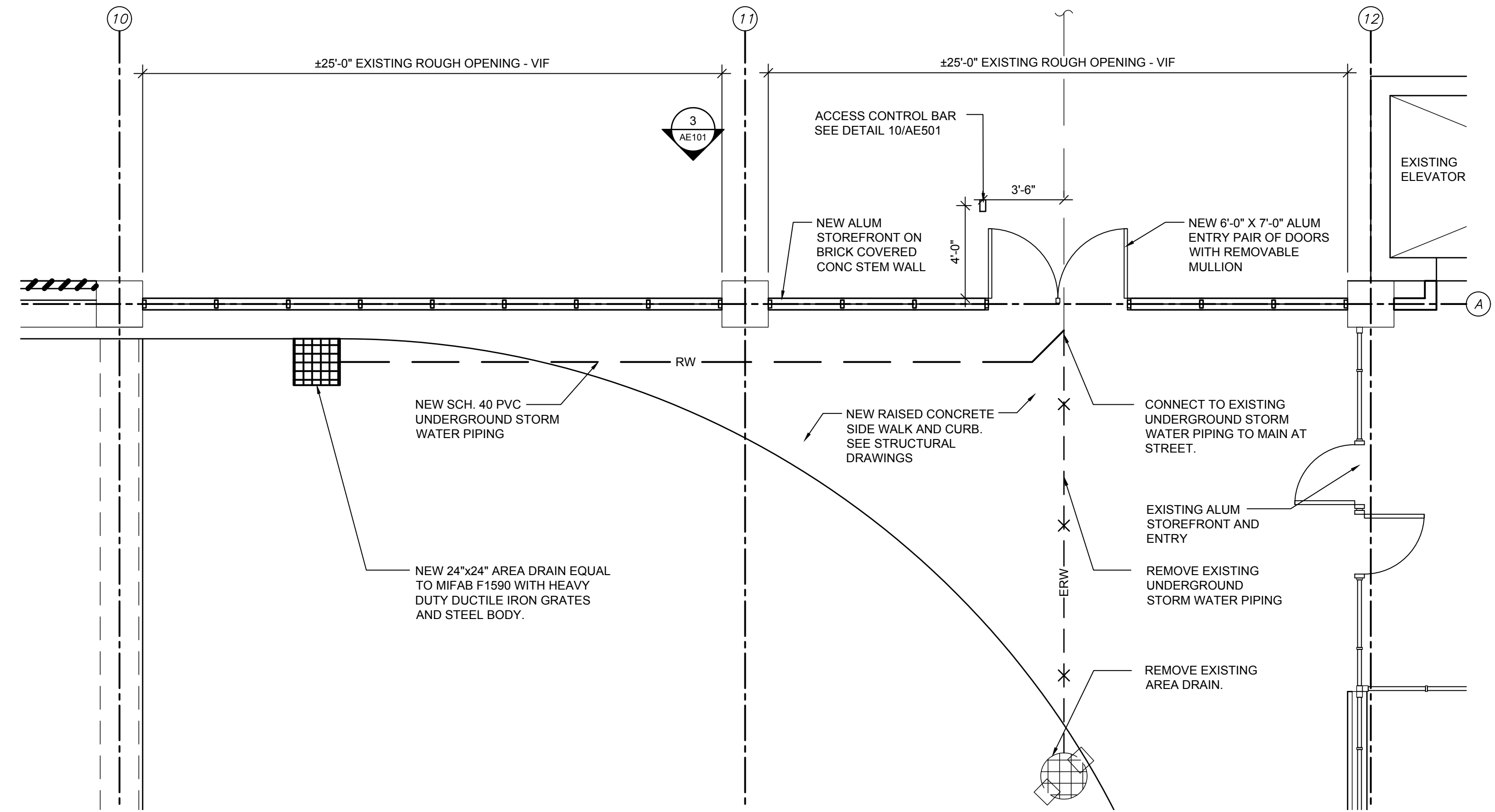


**GENERAL NOTES**

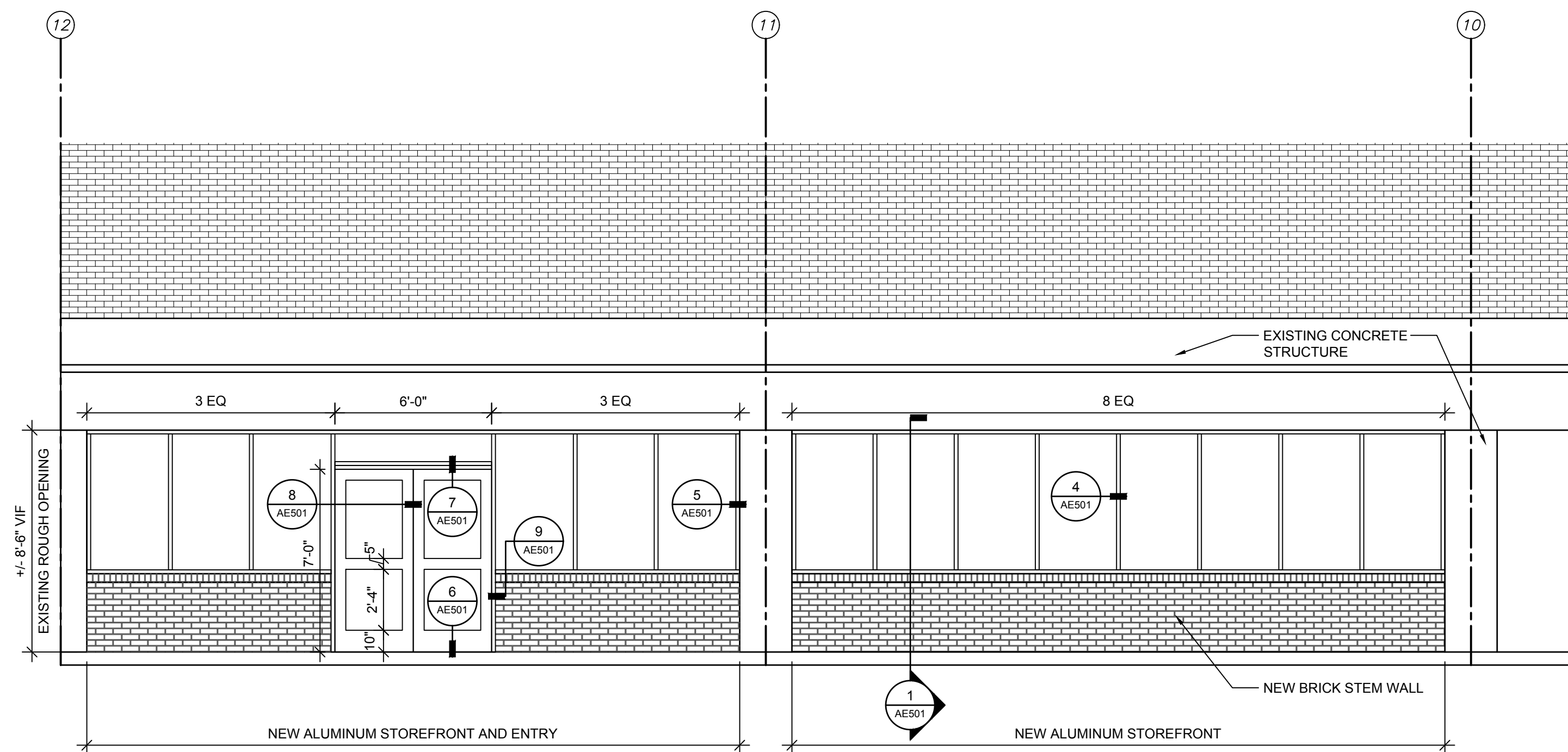
1. GENERAL CONTRACTOR (GC) SHALL FIELD VERIFY EXISTING CONDITIONS. IF DISCREPANCIES ARE FOUND, GC TO NOTIFY ARCHITECT FOR CLARIFICATION BEFORE COMMENCING WITH THE WORK.
2. DO NOT SCALE DRAWINGS, THE DRAWINGS ARE NOT NECESSARILY TO SCALE - USE GIVEN DIMENSIONS. CONTRACTOR SHALL VERIFY ALL DIMENSIONS AT THE JOB SITE PRIOR TO THE START OF CONSTRUCTION. IF DISCREPANCIES ARE FOUND, NOTIFY ARCHITECT FOR CLARIFICATION BEFORE COMMENCING THE WORK.
3. GC AND SUBCONTRACTORS (SC) ARE RESPONSIBLE FOR PROVIDING ALL REMOVALS AND PATCHING REQUIRED TO COMPLETE THEIR WORK IN ACCORDANCE WITH THE DESIGN INTENT. GC SHALL PROTECT, REPLACE OR REPAIR ANY EXISTING CONSTRUCTION SCHEDULED TO REMAIN WHICH IS DAMAGED DURING REMOVALS.
4. VERIFY ALL EQUIPMENT OPENINGS & RECOMMENDATIONS. LOCATION AND SIZES SHOWN ARE FOR INTENT PURPOSES ONLY. ADJUST ROUGH OPENINGS AND LOCATIONS AS REQUIRED PER ACTUAL EQUIPMENT.
5. CONTRACTOR SHALL VERIFY WITH THE OWNER THOSE REMOVED ITEMS TO BE TURNED OVER TO THE OWNER.

4 GENERAL NOTES



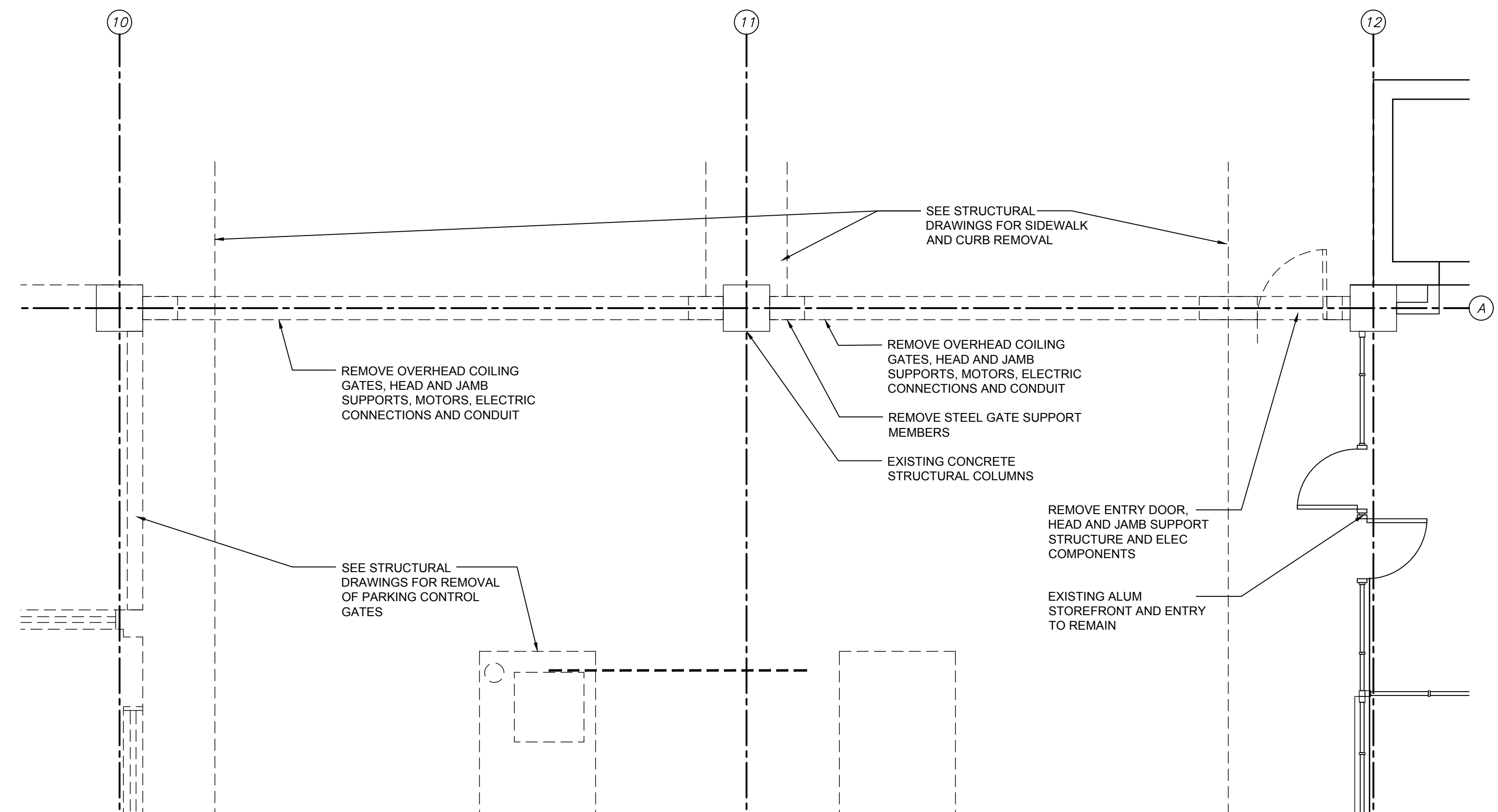
2 STOREFRONT PLAN

1/4" = 1'-0"



3 STOREFRONT ELEVATION

3" = 1'-0"



1 REMOVALS PLAN

1/4" = 1'-0"

Approved	
Issued For	
Date	
Rev No	

PICKERING SQUARE PARKING GARAGE  
BANGOR, ME  
STOREFRONT PLAN AND ELEVATION

Designed	SEP	Scale	AS NOTED
Drawn	JDL	Date	10/05/18
Checked	SEP	Becker Job Number	4357

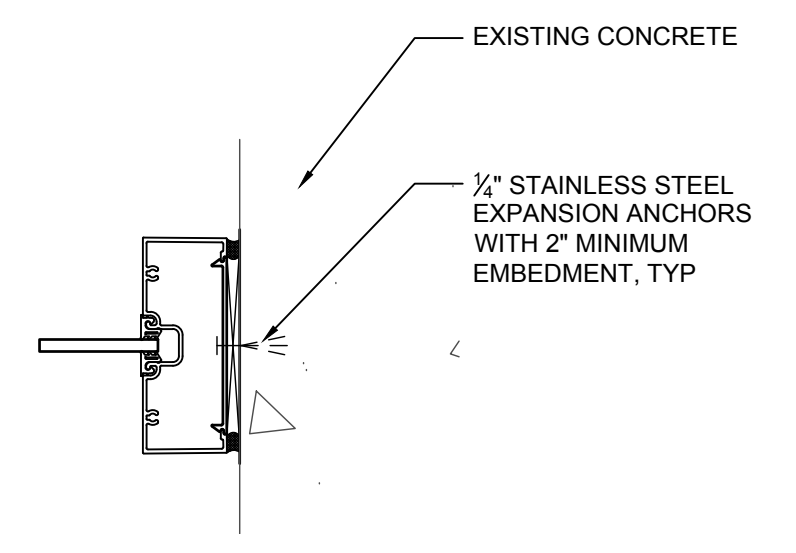
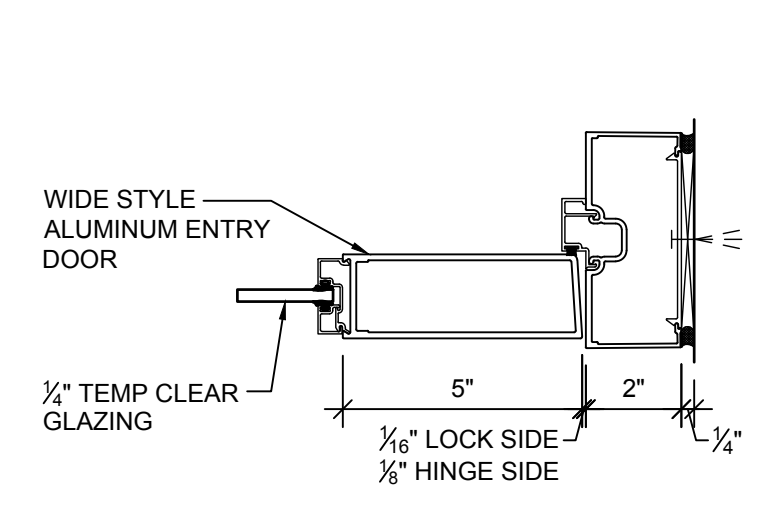
AE101

Approved	
Issued For	
Date	
Rev No	

PICKERING SQUARE PARKING GARAGE  
 BANGOR, ME  
 STOREFRONT DETAILS

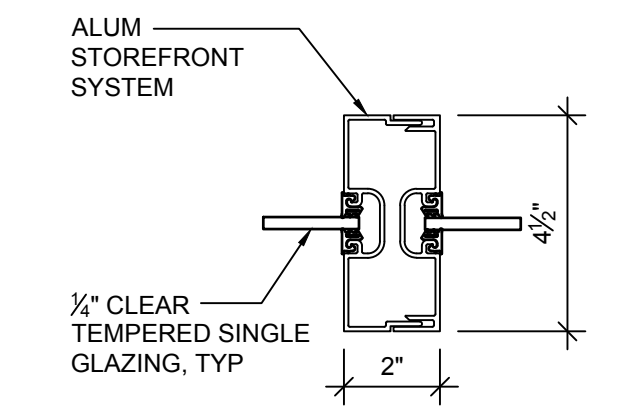
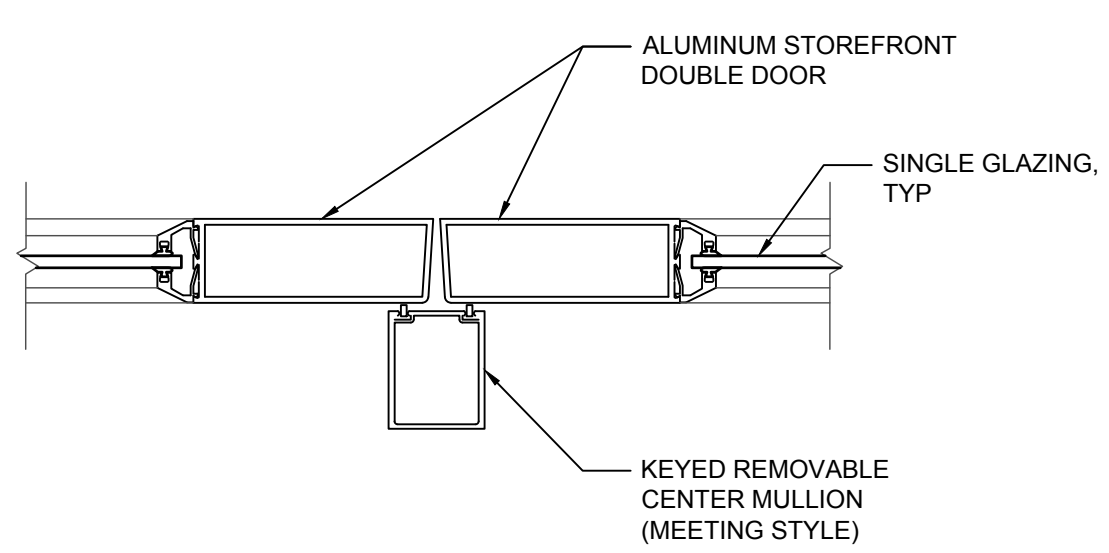
Designed	SEP	Scale	AS NOTED
Drawn	JDL	Date	10/05/18
Checked	SEP	Becker Job Number	4357

AE501



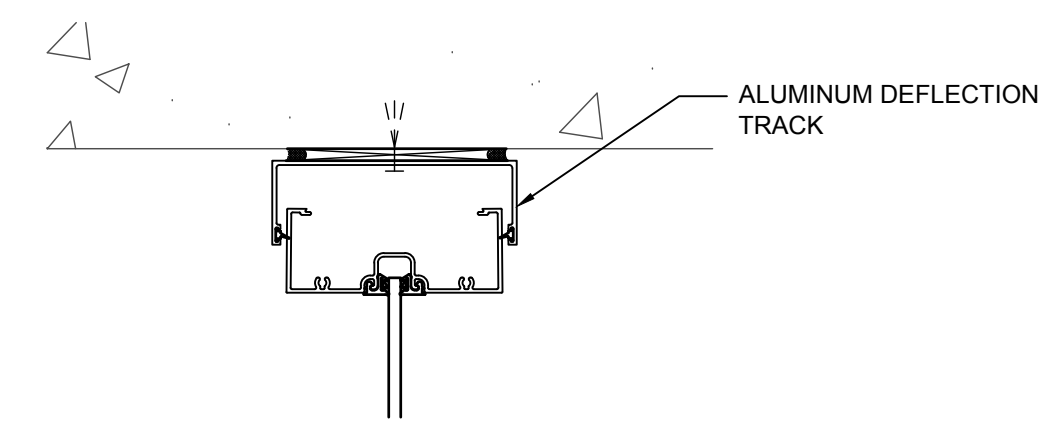
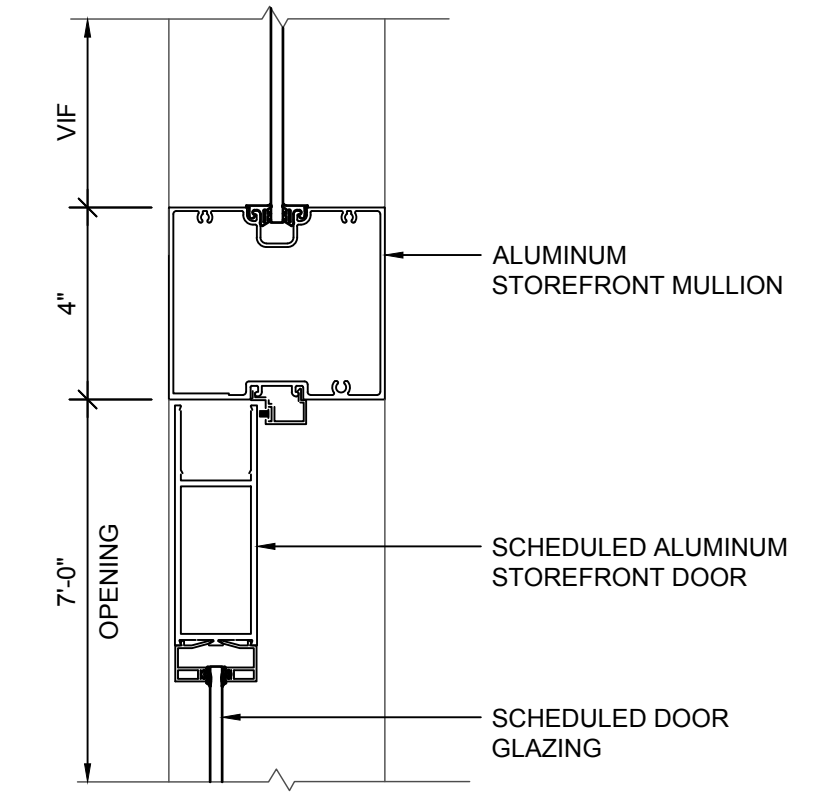
9 DOOR JAMB  
 3" = 1'-0"

5 STOREFRONT JAMB  
 3" = 1'-0"



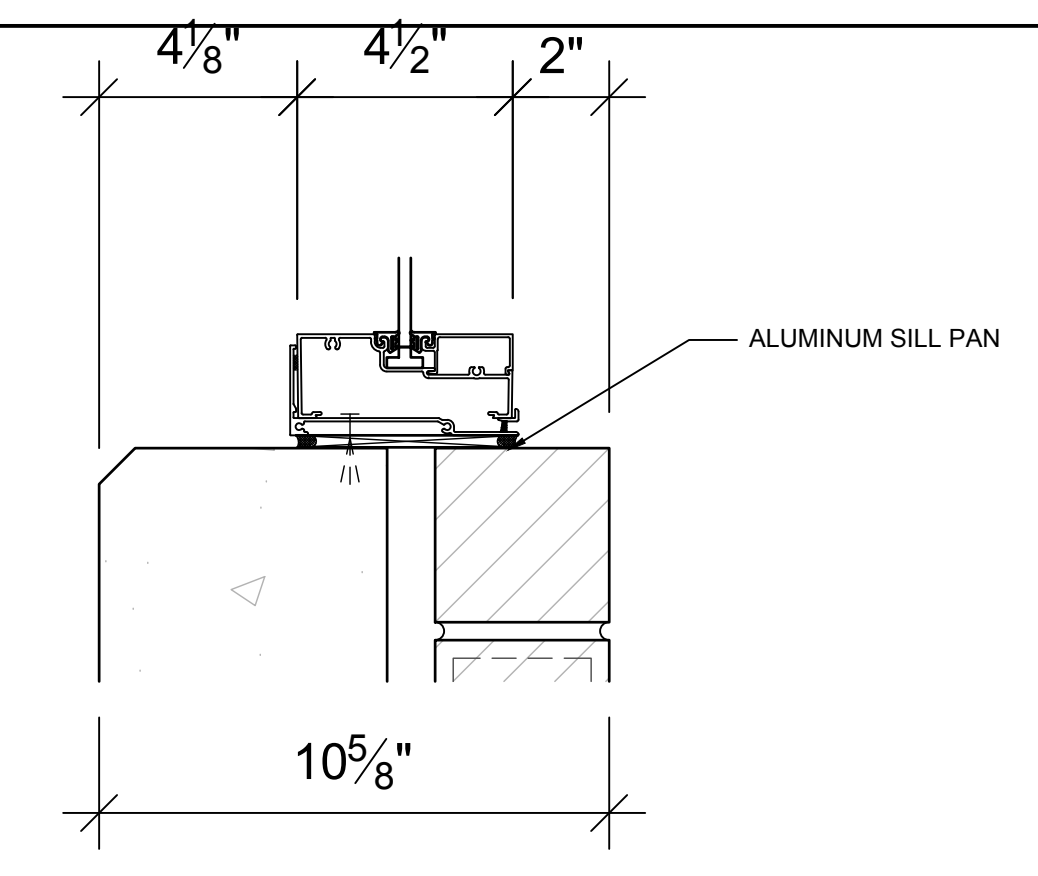
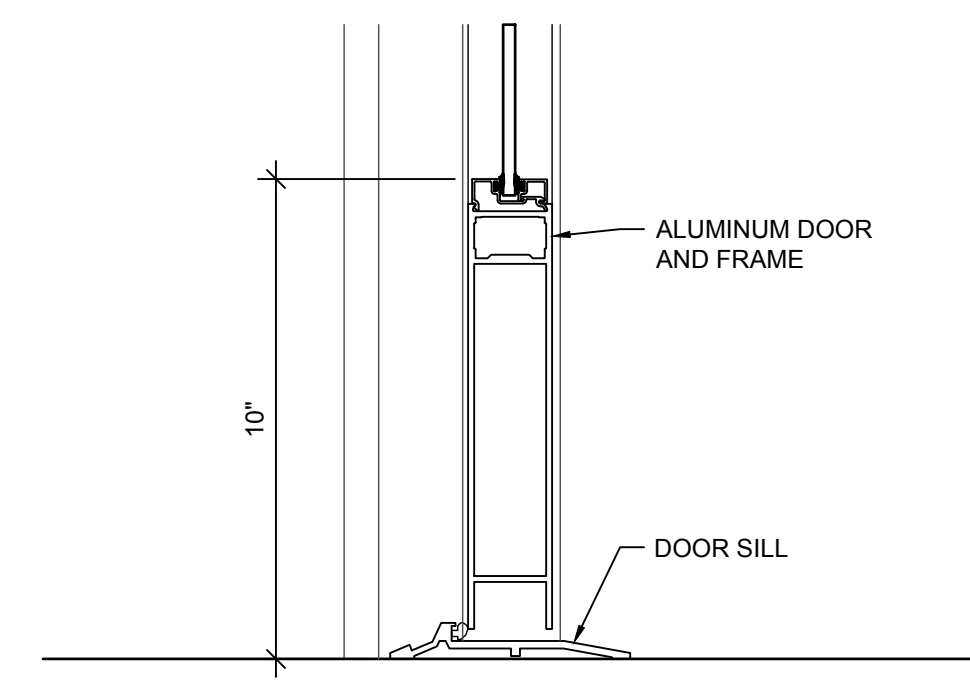
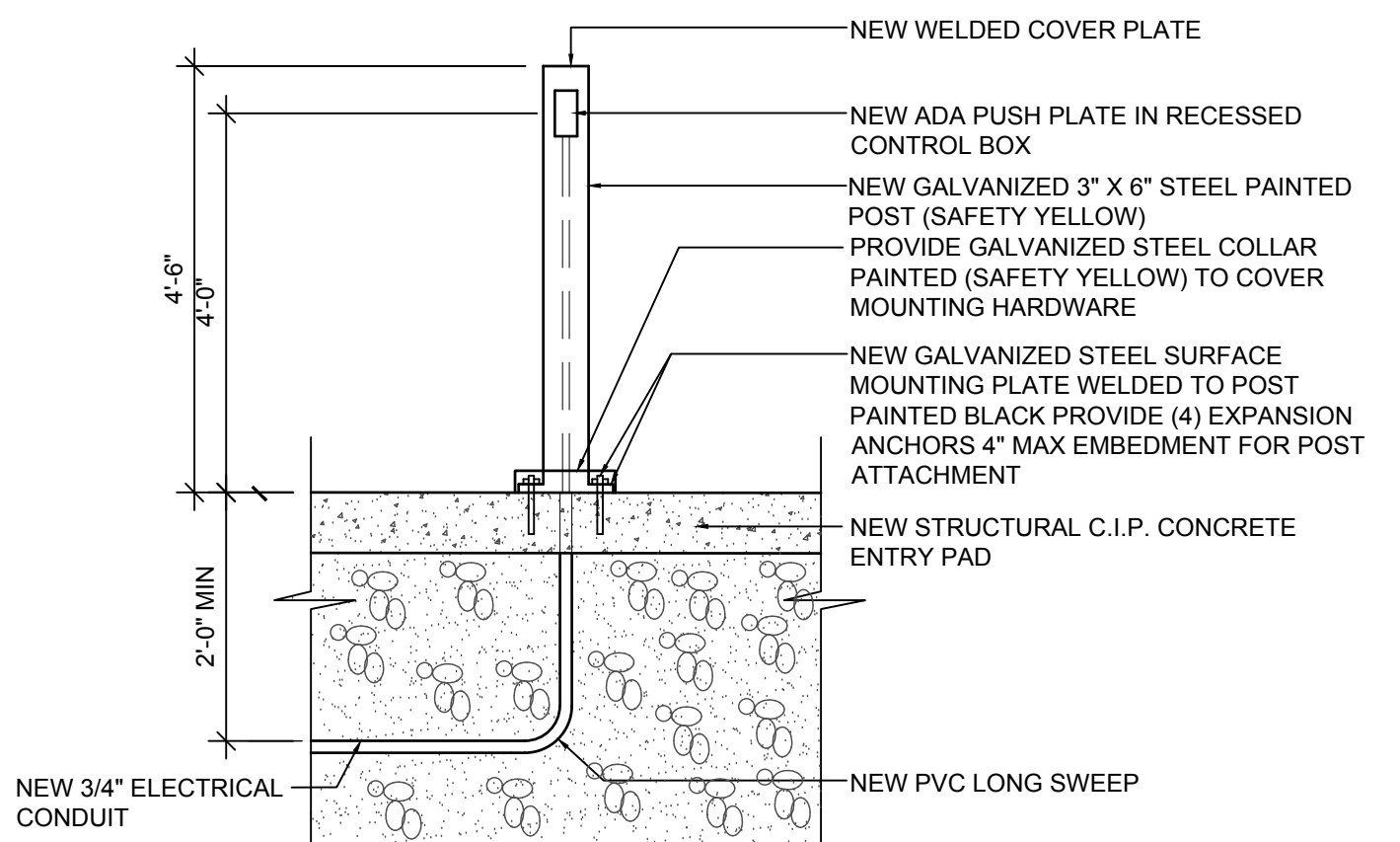
8 DETAIL  
 3" = 1'-0"

4 DETAIL  
 3" = 1'-0"



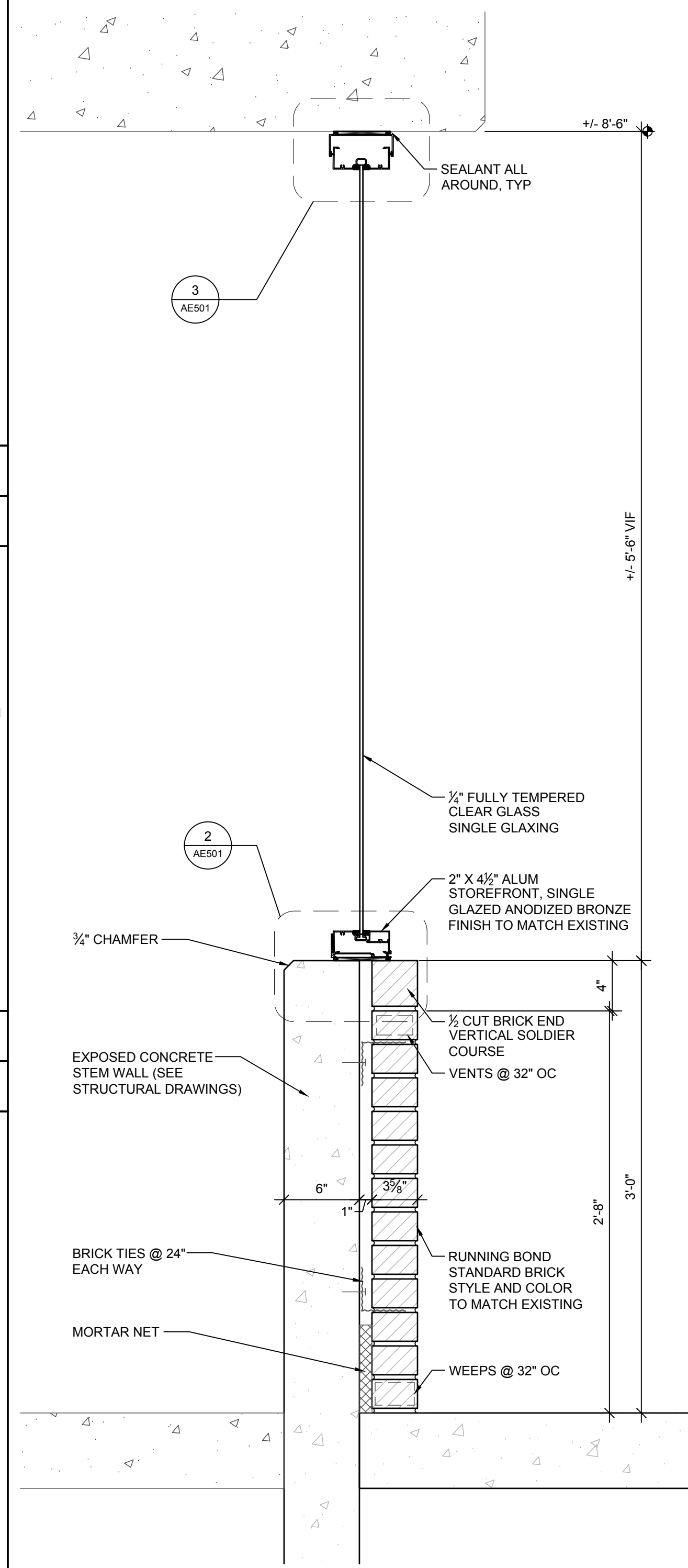
7 DOOR HEAD  
 3" = 1'-0"

3 STOREFRONT HEAD DETAIL  
 3" = 1'-0"



6 DOOR SILL  
 3" = 1'-0"

2 STOREFRONT SILL DETAIL  
 3" = 1'-0"



1 SECTION  
 1 1/2" = 1'-0"

10 NEW ACCESS CONTROL POST  
 1/2" = 1'-0"